

SONATA



Absolute Sensation

The new SONATA boasts an ideal proportion of sporty design cues and high-tech details that inspire those who are not afraid to express individuality.



[More details](#)



Sportier Than Ever

Be captivated by the silhouette that embodies the dynamic looks and spirited emotions of absolute sportiness.





Exterior

The distinctively carved front and lateral details reinforce a futuristic and agile look.



Fully Integrated Front Design



Fender LED Turn Signal Lamp

Eye-catching lightings that span the width of the car exudes a confident impression, complemented by a robust set of alloy wheels.



Seamless Horizon Lamp



H-lights
Rear Bumper Garnish



18-inch Alloy Wheels

Interior

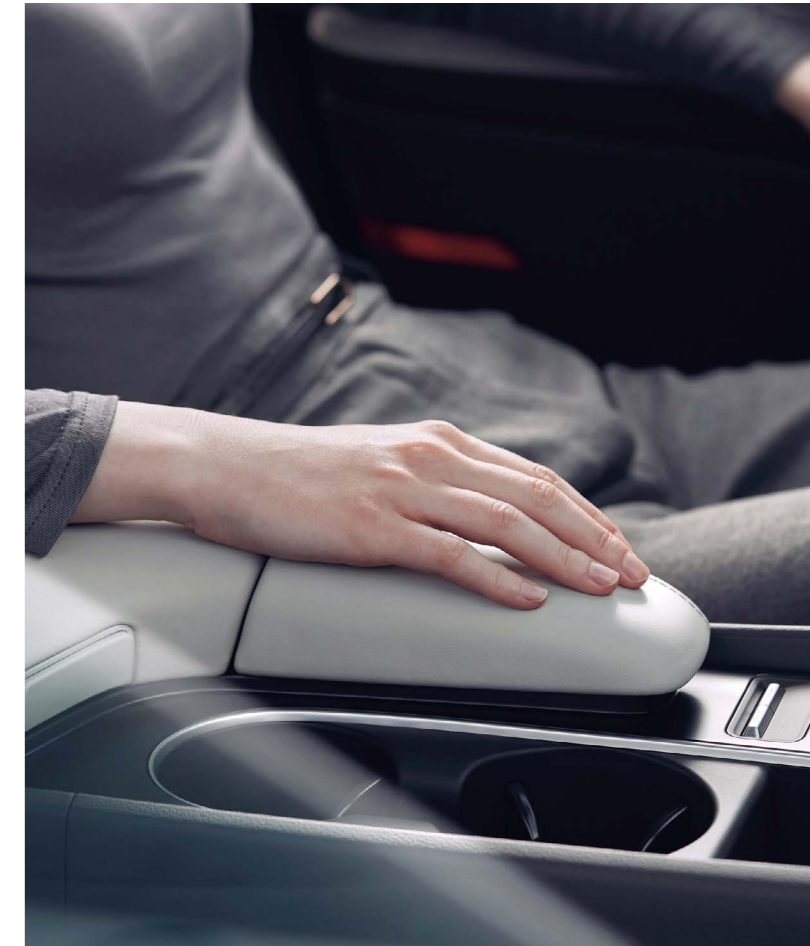
A modern and simple frontal layout unfolds a spacious driver-oriented cabin that elevates driving experience.



3-spoke Steering Wheel



Panoramic Curved Display



Center Console Palm Rest

A practical interior space creates a pleasant ambiance when onboard.



Pure Leather Seats



Bezel-less Inside Mirror



Ambient Mood Lamp

Convenience

Thoughtfully curated intuitive convenience features assure an effortless drive.



Head-up Display (HUD)



Column-Type Shift by Wire (SBW)

Settle into a comfort zone that lies underneath a sporty vibe.



Front Passenger Relaxation Seat



Full Touch-type Air Conditioning Controller
Smartphone Wireless Charger



Power Rear Window Sunshade



Smart Power Trunk



Performance

Feel confident when behind the wheel of a redesigned and refined sports sedan.

Smartstream G2.5 GDi

194 Maximum Power
PS/6,100 rpm

25.1 Maximum Torque
kgf-m/4,000 rpm



Upgraded Ride and Handling
Improved suspension and tuning offers an upgraded ride and handling.

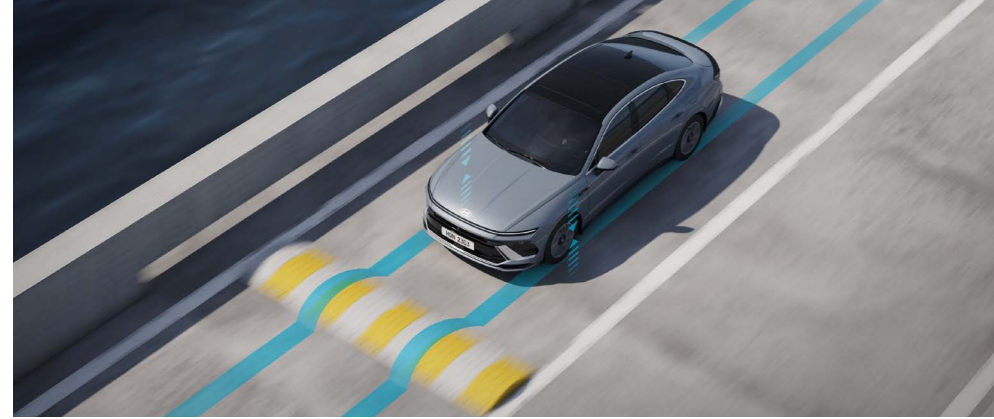


Reduced Road/Wind Noise
Enhanced structure and fine details minimizes inflow of external noise.

Hybrid

A smarter way of driving with hybrid dedicated technologies that provide a smoother ride and dynamic cornering.

e-Comfort Drive



When passing speed bumps, this hybrid technology manages the motor to reduce vehicle shaking and provide a smooth ride on an uneven road.



When accelerating, the hybrid system controls the vehicle's motion such that the driver experiences less shaking and more linear acceleration.

e-Dynamic Drive



When the vehicle approaches a turn, the hybrid system regulates the vehicle's movement to execute torque vectoring while simultaneously maintaining the ideal level of tire grip for dynamic handling performance.



During overtaking acceleration, this function provides a quick acceleration response and improved torque performance.

Smartstream G2.0 GDi HEV

Engine		Electric Motor	
152	Maximum Power PS/6,000 rpm	19.2	Maximum Torque kgf-m/5,000 rpm
		38.6	Maximum Power kW
			205
			Maximum Torque Nm



Paddle Shift- Regenerative Braking Mode
Allows the driver to adjust to the optimal regenerative braking stages when driving.

12V Battery Reset Button
The battery protection function automatically shuts off power when a risk of battery discharge is detected. The 12V battery reset button temporarily reconnects the cut-off power to allow the engine to start again.



Hybrid Exclusive Features
Provides essential driving information such as fuel efficiency, energy flow, and personalized in-depth analysis for smarter driving.

N Line

Invigorate your driveway with N Line's exclusive powertrain and distinctive design highlights that elevate both performance and style.



Black High Glossy Radiator Grille



Rear Spoiler Garnish
Dual Twin Tip Muffler

Smartstream G2.5 T-GDi

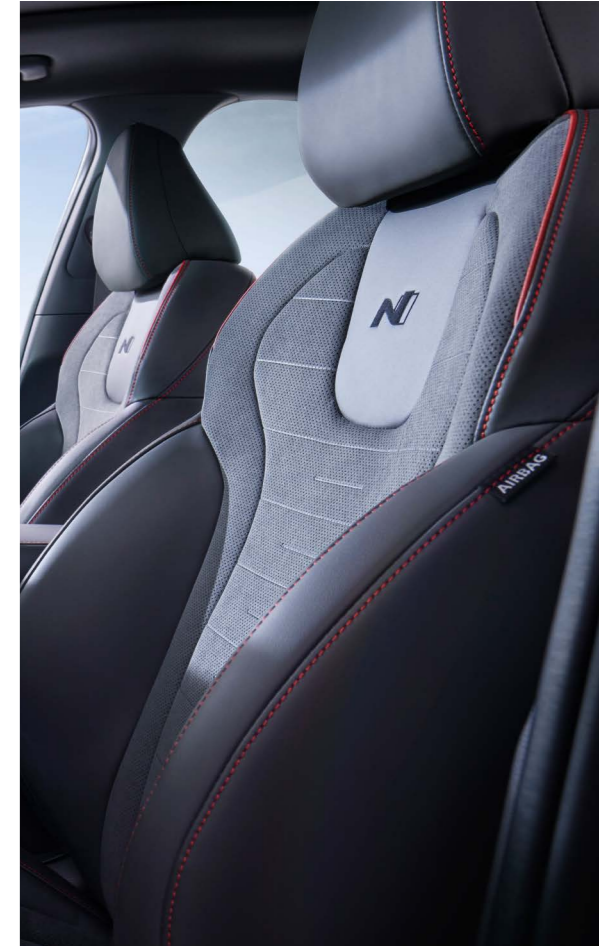
290 Maximum Power PS/5,800 rpm 43.0 Maximum Torque kgf-m/1,650-4,000 rpm



19-inch Alloy Wheels



Air Vent Red Garnish
Red Stitched Point



N Line Exclusive Suede Seat

Safety

Diverse safety functions ensure uncompromised safety even against risks that can be easily overlooked.



Rear Occupant Alert



Safety Power Window



Blind-Spot View Monitor (BVM)

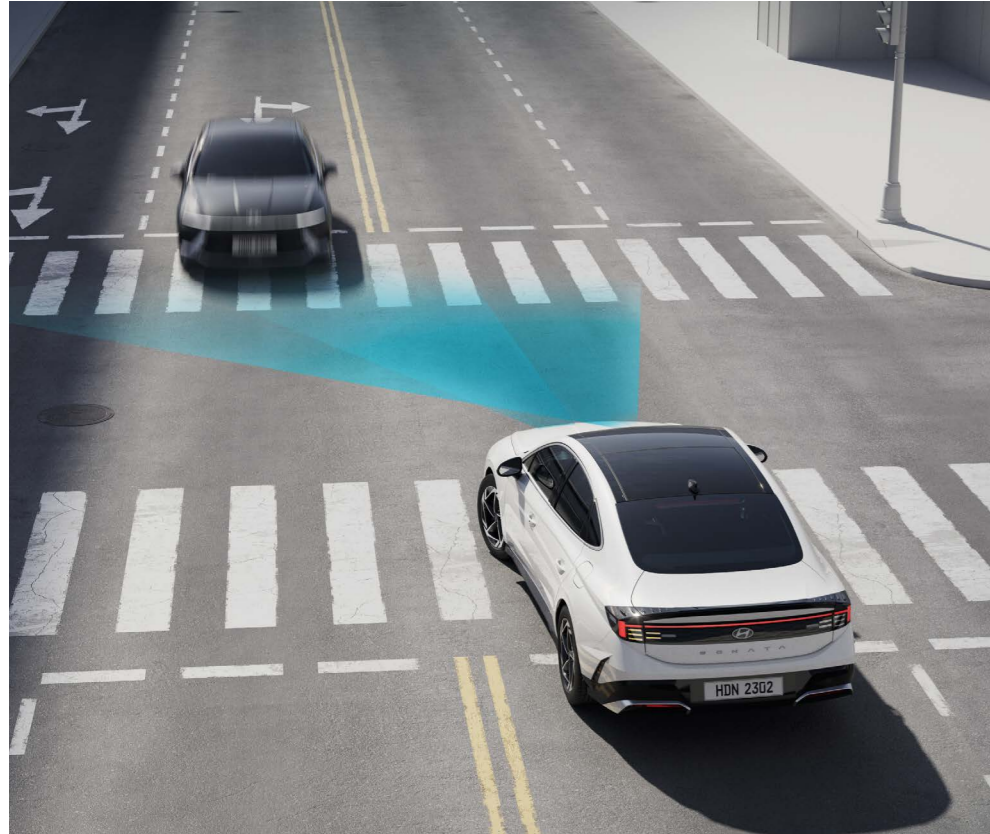


Surround View Monitor (SVM)

Hyundai SmartSense



More details



Forward Collision-Avoidance Assist (FCA)

Forward Collision-Avoidance Assist (FCA) monitors your surroundings and warns you if there is a risk of collision. After the warning, it automatically assists with emergency braking if the risk of collision with the target increases (e.g. a leading vehicle which suddenly slows down, a vehicle, a PTW, a pedestrian or a cyclist in the front). If the risk of collision with an oncoming vehicle or a PTW increases while turning left at an intersection or if the risk of collision with an oncoming vehicle increases while driving in the lane, it automatically assists with emergency braking.



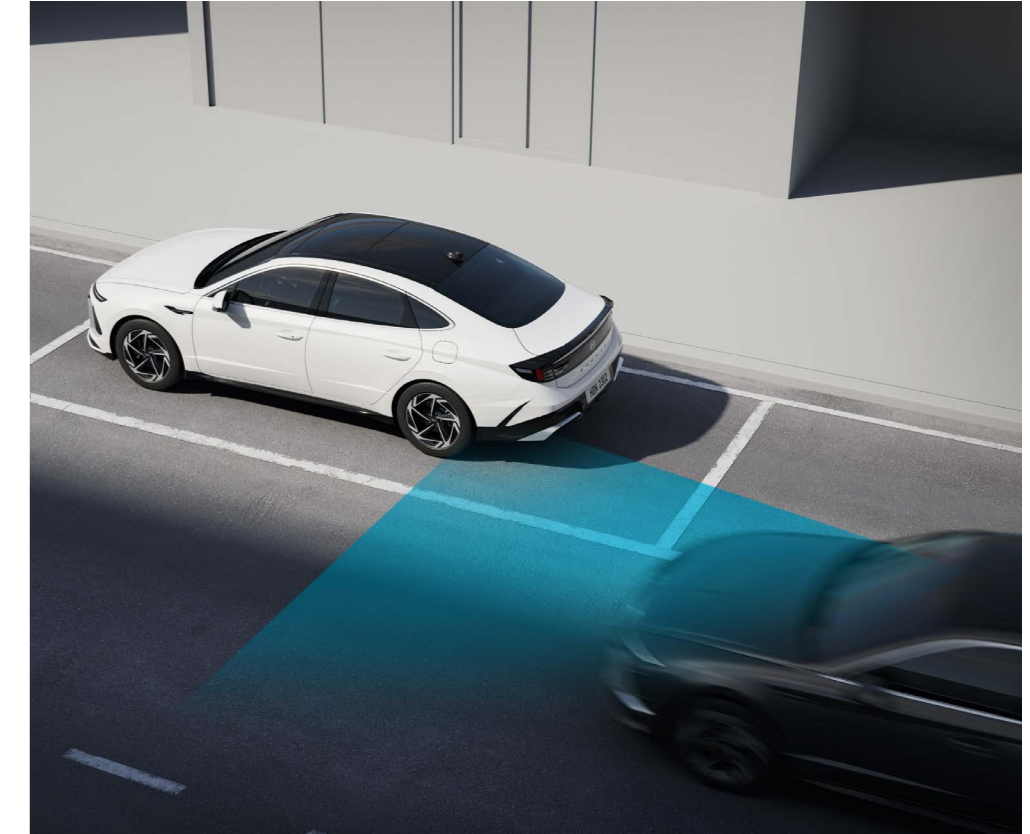
Remote Smart Parking Assist (RSPA)

Remote Smart Parking Assist (RSPA) helps the driver to park or exit a parking spot remotely. It automatically assists with steering, accelerating, decelerating, and shifting by using the vehicle's sensors. It automatically assists with braking when an object is detected in the vehicle's path. The driver can perform "Remote Operation" using the smart key when the driver is outside the vehicle.



Blind-Spot Collision-Avoidance Assist (BCA)

Blind-Spot Collision-Avoidance Assist (BCA) warns you if there is a risk of collision with a rear side vehicle in the blind-spot while changing lanes. When forward exiting a parallel-parking spot, it automatically assists with emergency braking if there is a risk of collision with a vehicle approaching from behind.



Safe Exit Assist (SEA)

Safe Exit Assist (SEA) warns you if there is a risk of collision with a vehicle approaching from behind when an occupant opens a door to exit the vehicle after coming to a stop. When the driver presses the Electronic Child Lock button to drop off a passenger in the rear seat, the electronic child lock remains locked to help prevent the door from opening if the risk of collision with a vehicle approaching from behind increases.



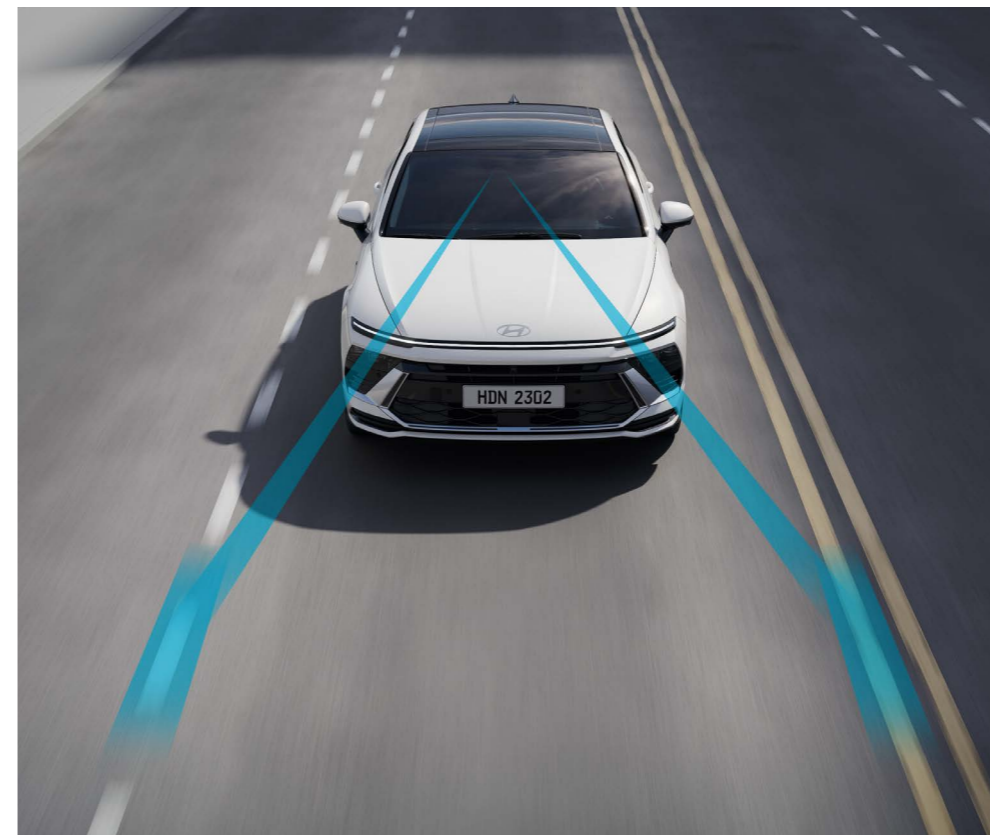
More details



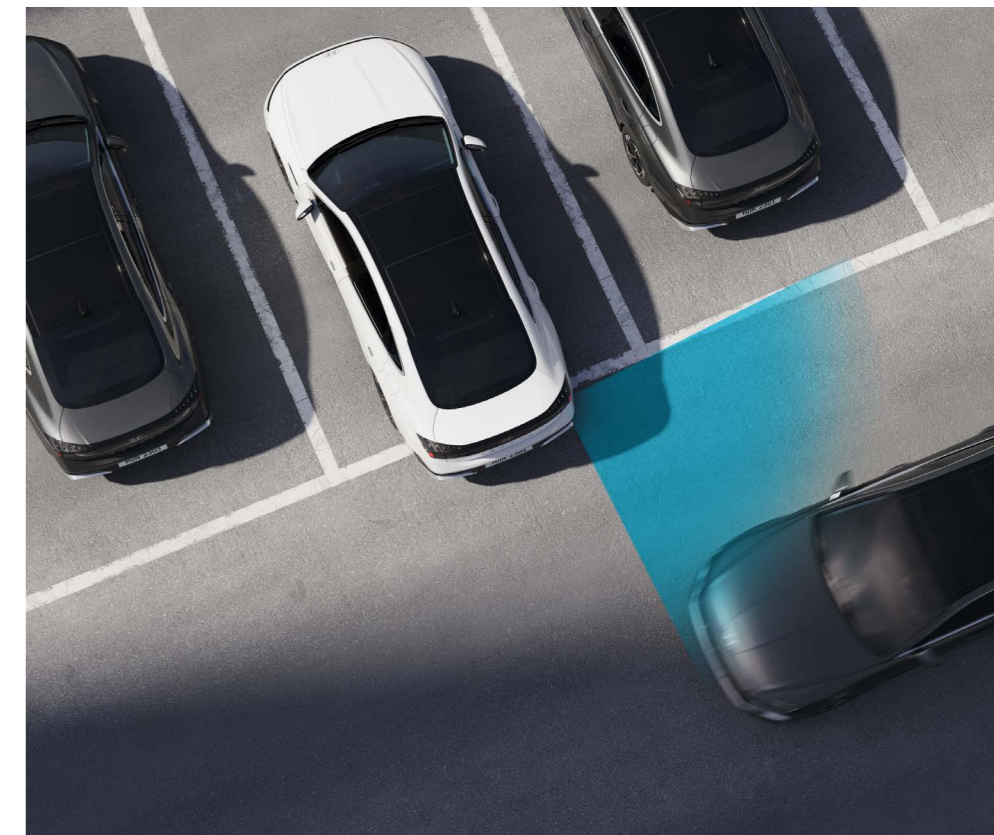
High Beam Assist (HBA)
High Beam Assist (HBA) automatically adjusts the high beams by detecting ambient light and illuminance, such as a lamp of an oncoming vehicle or a preceding vehicle.



Smart Cruise Control (SCC)
Smart Cruise Control (SCC) helps maintain distance from the front vehicle and drive at a speed set by the driver. Automatically stops when the front vehicle stops and starts automatically when the front vehicle departs within a short time.



Lane Following Assist (LFA)
Lane Following Assist (LFA) helps center the vehicle in the lane.



Rear Cross-Traffic Collision-Avoidance Assist (RCCA)
Rear Cross-Traffic Collision-Avoidance Assist (RCCA) provides a warning if there is a risk of collision with an oncoming vehicle on the left or right side while reversing. After the warning, it automatically assists with emergency braking if the risk of collision increases.

Features



More details



16" alloy wheels

16" alloy wheels (hybrid)

17" alloy wheels

17" alloy wheels (hybrid)

18" alloy wheels



Full LED Headlamps (MFR Type)



Full LED Headlamps (Projection Type)



Outside Door Handle



Acoustic Film (Windshield)



4.2-Inch Color LCD Cluster



Manual Air Conditioning



Switch Type USB Module



Bose Premium Sound



LED Rear Combination Lamps (Bulb Turn Signal)



LED Rear Combination Lamps (LED Turn Signal)



High Mounted Stop Lamp



Panorama Sunroof



Ventilated 1st Row Seats



2nd row Manual Door Curtain



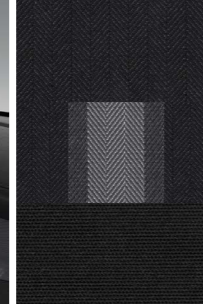
Type-C USB Charger (2 in 2nd row)



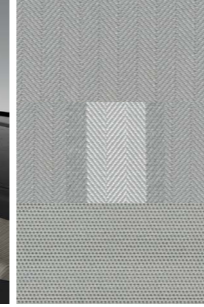
Door Courtesy Lamp

Interior colors

Standard



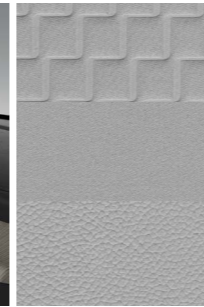
Black monotone (full cloth seats)



Dark gray monotone (full cloth seats)

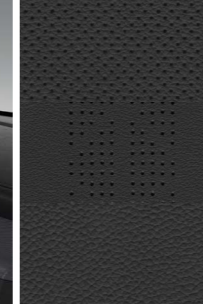


Black monotone (cloth + artificial leather seats)

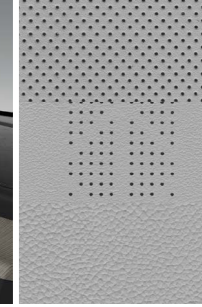


Dark gray monotone (cloth + artificial leather seats)

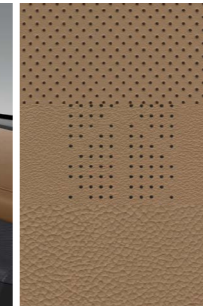
Top



Black monotone (pure leather seats)



Dark gray monotone (pure leather seats)



Camel/Dark gray two-tone (pure leather seats)

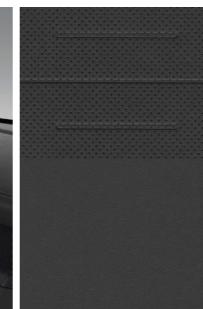
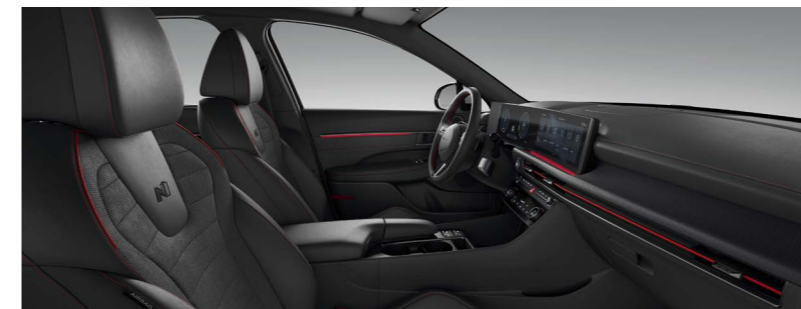


Navy/Dark gray two-tone (pure leather seats)

Color combination chart

Trim	Exterior		Serenity white pearl (W6H)	Atlas white (SAW)	Aero silver metallic (T4A)	Transmission blue pearl (NY9)	Biophilic blue pearl (XB9)	Abbyss black pearl (A2B)	Ultimate red metallic (R2P)	Nocturne gray metallic (T2G)	Nocturne gray matte (T9M)	Aero silver matte (T4M)
	Interior											
Standard	Black monotone		•	•	•	•	•	•	•	•	•	•
	Dark gray monotone		•	•	•	•	•	•	•	•	•	•
Top	Black monotone		•	•	•	•	•	•	•	•	•	•
	Dark gray monotone		•	•	•	•	•	•	•	•	•	•
	Camel/Dark gray two-tone		•	•	•	•	•	•	•	•	•	•
N Line	Navy/Dark gray two-tone		•	•	•	•	•	•	•	•	•	•
	Dark gray monotone+ red point		•	•	•	•	•	•	•	•	•	•

N Line



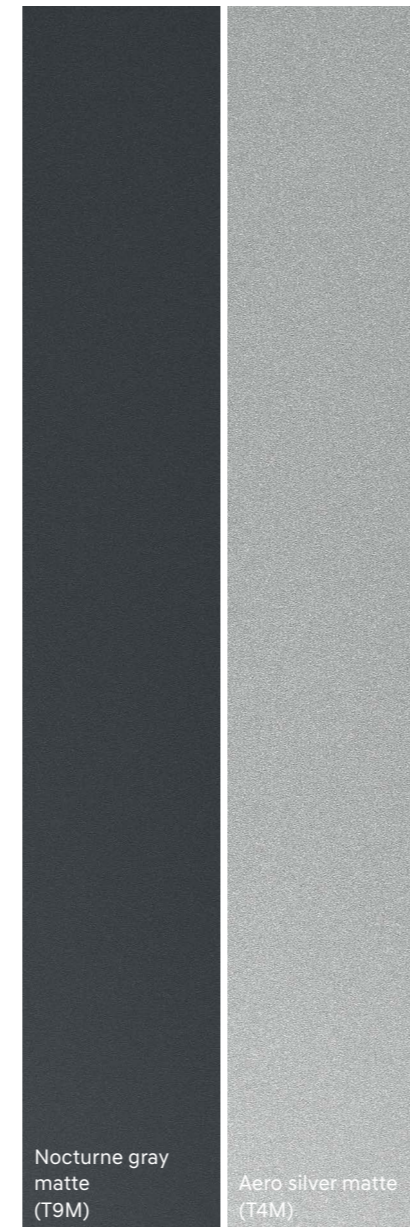
Dark gray monotone + red point (suede + nappa leather seats)

Exterior colors

Pearl / Metallic colors



Matte colors



Specifications

Classification		Smartstream G2.5 GDi	Smartstream G2.5 T-GDi	Smartstream G2.0 GDi HEV
Engine	Type	Theta III 2.5 GDi	Theta III 2.5 T-GDi	Nu PE 2.0 GDi
	Displacement (cc)	2,497	2,497	1,999
	Max. Power (PS / rpm)	194 / 6,100	290 / 5,800	152 / 6,000
	Max. Torque (kgf-m / rpm)	25.1 / 4,000	43.0 / 1,650-4,000	19.2 / 5,000
Motor	Max. Power (kW)	-	-	38.6
	Max. Torque (Nm)	-	-	205
Suspension				
Front		McPherson Strut Type		
Rear		Multi-Link Type		
Tire				
205/65R16, 215/55R17, 235/45R18, 245/40R19 (N Line)				
Dimensions				
Head room (mm) (sunroof)	Front / Rear	1,015 / 960		
Leg room (mm)	Front / Rear	1,170 / 885		
Shoulder room (mm)	Front / Rear	1,470 / 1,425		

- The above values are results from internal testing and are subject to change after validation.
- Some of the equipment illustrated or described in this catalog may not be supplied as standard equipment and may be available at additional cost.
- Hyundai Motor Company reserves the right to change specifications and equipment without prior notice.
- The color plates shown may vary slightly from the actual colors due to the limitations of the printing process.
- Please consult your dealer for full information and availability on colors and trims.



Unit : mm * Wheel tread • 16" alloy wheel (Front / Rear) : 1,633 / 1,640 • 17" alloy wheel (Front / Rear) : 1,623 / 1,630 • 18" alloy wheel (Front / Rear) : 1,618 / 1,625 • 19" alloy wheel (Front / Rear) : 1,610 / 1,617

Hyundai Motor Company

<http://worldwide.hyundai.com>

ME. LHD 2310 ENG. KM

Copyright © 2023 Hyundai Motor Company. All Rights Reserved.